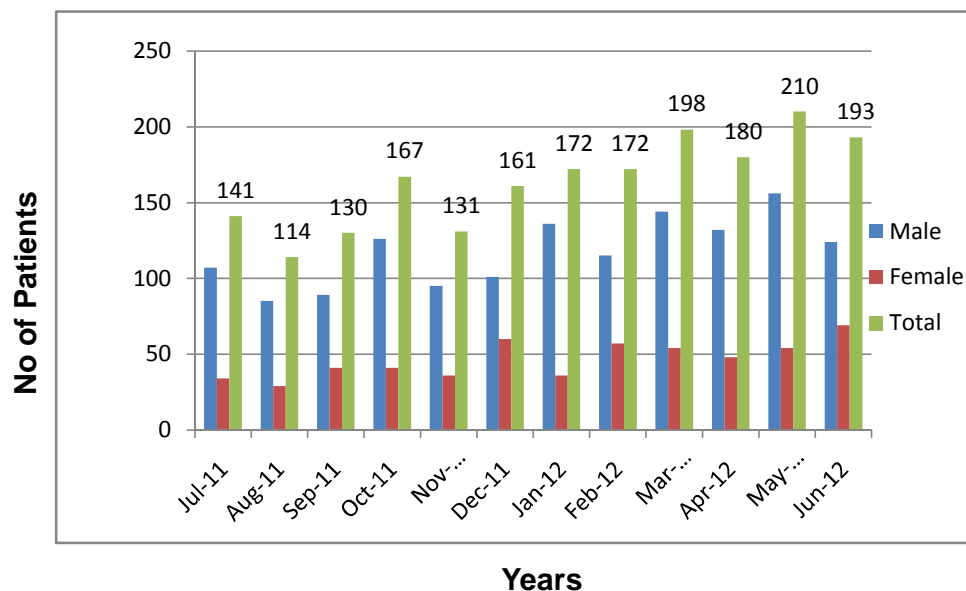


Karachi Institute of Heart Diseases
Summary of Angiography
July 2011 To June 2012

S.No	Month & Year	Male	Female	Total
1	Jul-11	107	34	141
2	Aug-11	85	29	114
3	Sep-11	89	41	130
4	Oct-11	126	41	167
5	Nov-11	95	36	131
6	Dec-11	101	60	161
7	Jan-12	136	36	172
8	Feb-12	115	57	172
9	Mar-12	144	54	198
10	Apr-12	132	48	180
11	May-12	156	54	210
12	Jun-12	124	69	193
Total		1410	559	1969

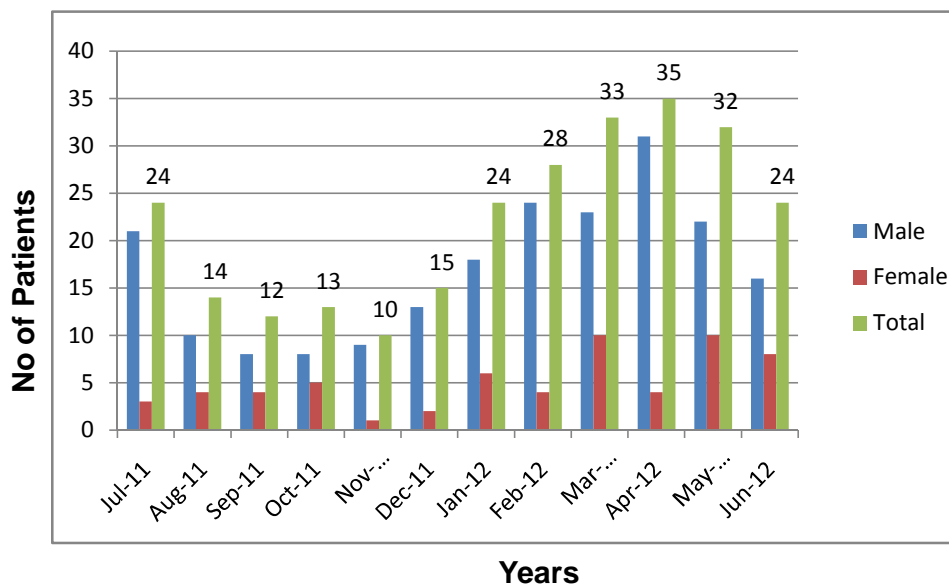
Summary Of Angiography
1 July 2011 - 30 June 2012



Karachi Institute of Heart Diseases
Summary of Angioplasty
July 2011 To June 2012

S.No	Month & Year	Male	Female	Total
1	Jul-11	21	3	24
2	Aug-11	10	4	14
3	Sep-11	8	4	12
4	Oct-11	8	5	13
5	Nov-11	9	1	10
6	Dec-11	13	2	15
7	Jan-12	18	6	24
8	Feb-12	24	4	28
9	Mar-12	23	10	33
10	Apr-12	31	4	35
11	May-12	22	10	32
12	Jun-12	16	8	24
Total		203	61	264

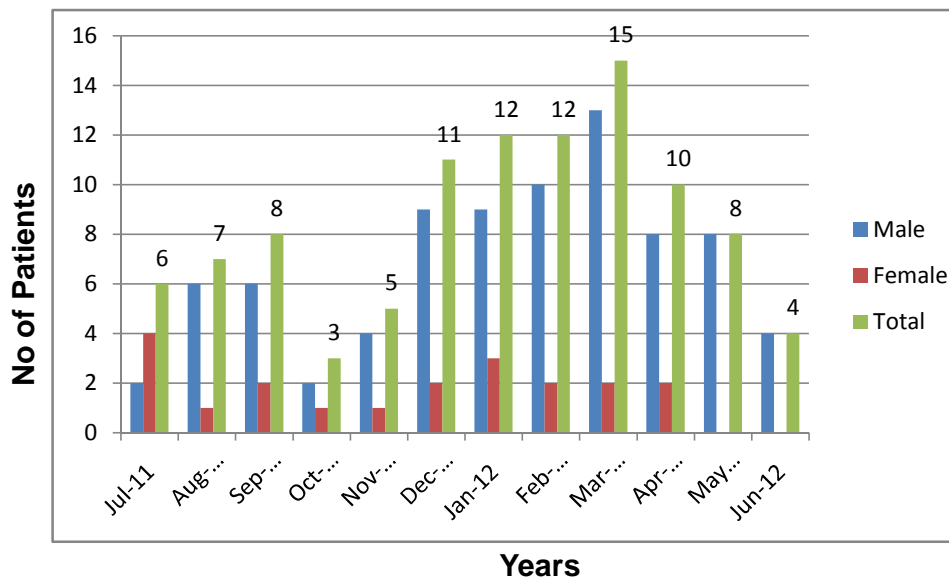
Summary Angioplasty
1 July 2011 - 30 June 2012



Karachi Institute of Heart Diseases
Summary of Bypass
July 2011 To June 2012

S.No	Month & Year	Male	Female	Total
1	Jul-11	2	4	6
2	Aug-11	6	1	7
3	Sep-11	6	2	8
4	Oct-11	2	1	3
5	Nov-11	4	1	5
6	Dec-11	9	2	11
7	Jan-12	9	3	12
8	Feb-12	10	2	12
9	Mar-12	13	2	15
10	Apr-12	8	2	10
11	May-12	8	0	8
12	Jun-12	4	0	4
Total		81	20	101

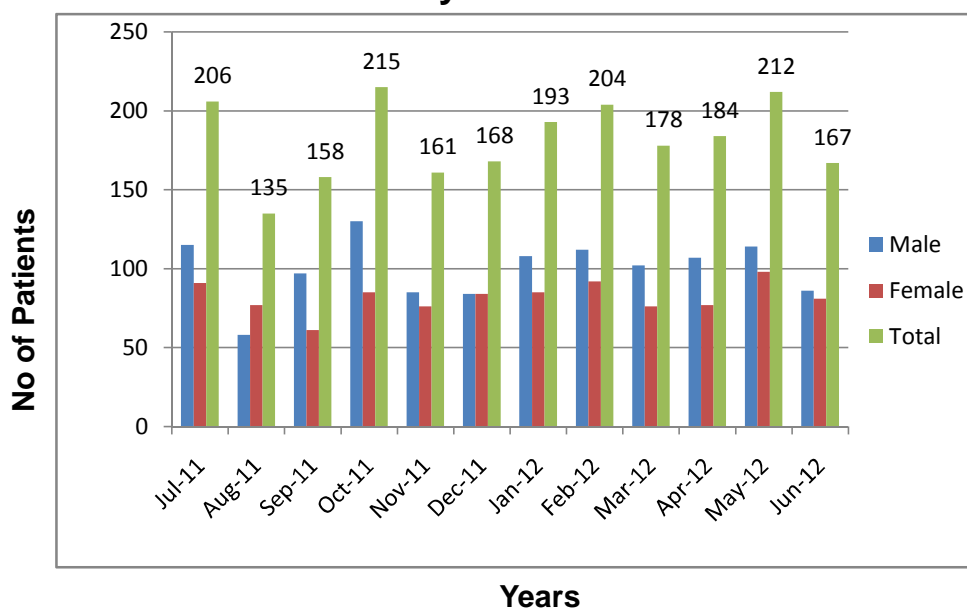
Summary Of Bypass
1 July 2011 - 30 June 2012



Karachi Institute of Heart Diseases
Summary of Thallium
July 2011 To June 2012

S.No	Month & Year	Male	Female	Total
1	Jul-11	115	91	206
2	Aug-11	58	77	135
3	Sep-11	97	61	158
4	Oct-11	130	85	215
5	Nov-11	85	76	161
6	Dec-11	84	84	168
7	Jan-12	108	85	193
8	Feb-12	112	92	204
9	Mar-12	102	76	178
10	Apr-12	107	77	184
11	May-12	114	98	212
12	Jun-12	86	81	167
Total		1198	983	2181

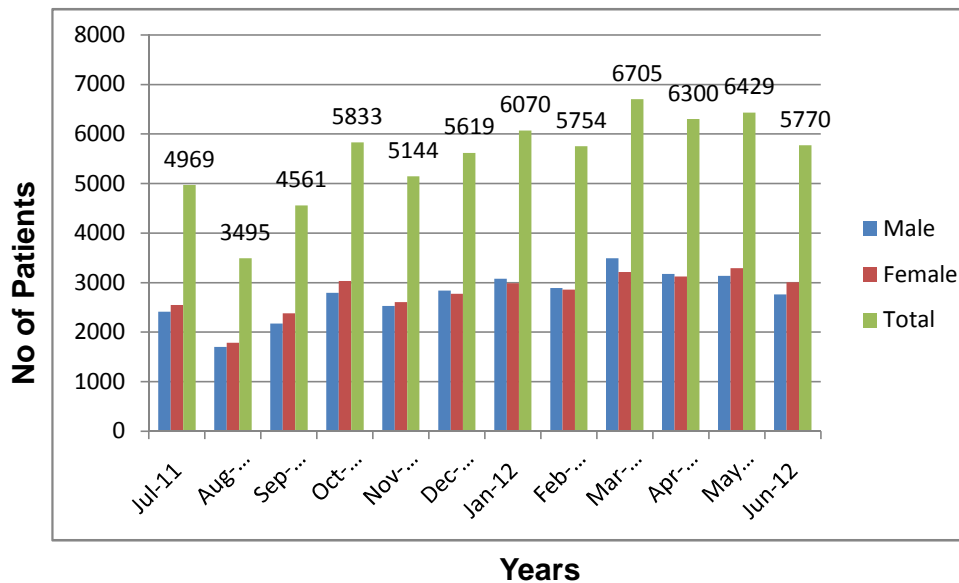
Summary Of Thallium
1 July 2011 - 30 June 2012



Karachi Institute of Heart Diseases
Summary of OPD
July 2011 To June 2012

S.No	Month & Year	Male	Female	Total
1	Jul-11	2417	2552	4969
2	Aug-11	1707	1788	3495
3	Sep-11	2176	2385	4561
4	Oct-11	2797	3036	5833
5	Nov-11	2534	2610	5144
6	Dec-11	2841	2778	5619
7	Jan-12	3080	2990	6070
8	Feb-12	2891	2863	5754
9	Mar-12	3491	3214	6705
10	Apr-12	3178	3122	6300
11	May-12	3137	3292	6429
12	Jun-12	2763	3007	5770
Total		33012	33637	66649

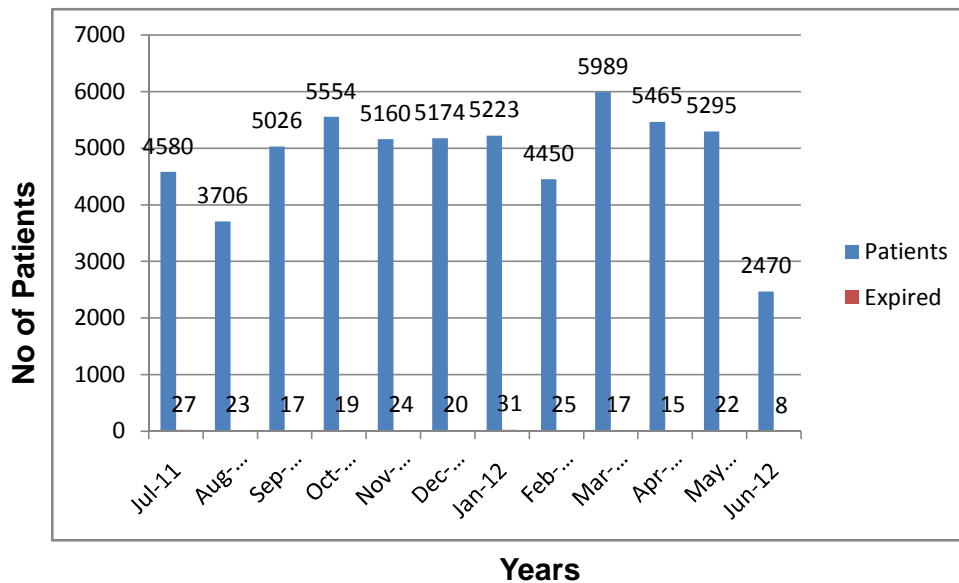
Summary Of O.P.D
1 July 2011 - 30 June 2012



Karachi Institute of Heart Diseases
Summary of ER
July 2011 To June 2012

S.No	Month & Year	Patients	Expired	B.D	% of Exp
1	Jul-11	4580	27	58	0.5895
2	Aug-11	3706	23	41	0.6219
3	Sep-11	5026	17	51	0.3382
4	Oct-11	5554	19	45	0.342
5	Nov-11	5160	24	63	0.465
6	Dec-11	5174	20	67	0.3865
7	Jan-12	5223	31	76	
8	Feb-12	4450	25	69	
9	Mar-12	5989	17	58	
10	Apr-12	5465	15	59	
11	May-12	5295	22	48	
12	Jun-12	2470	8	25	
Total		58092	248	660	

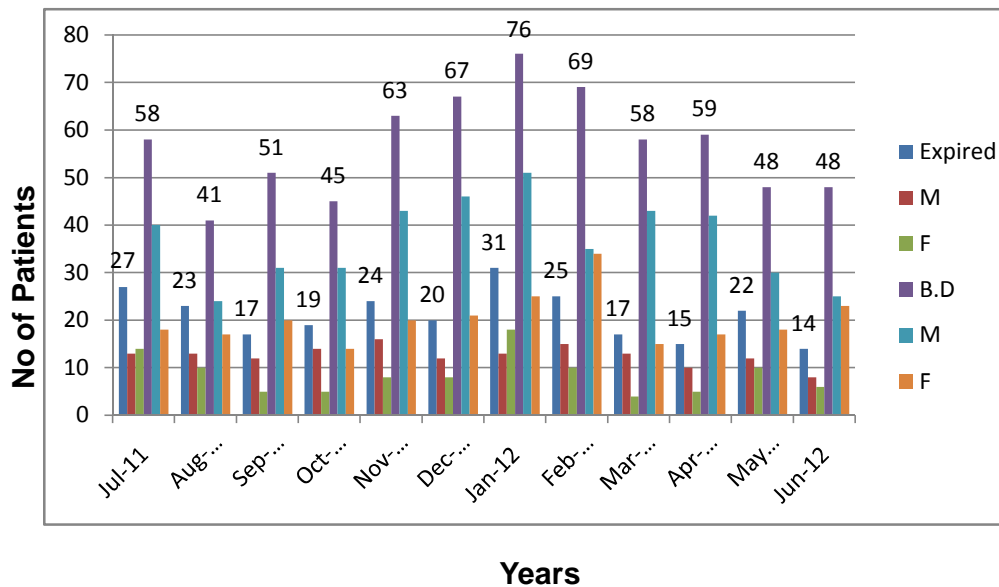
Summary Of E.R
1 July 2011 - 30 June 2012



Karachi Institute of Heart Diseases
Summary of ER (Expire & BD)
July 2011 To June 2012

S.No	Month & Year	Expired	M	F	B.D	M	F
1	Jul-11	27	13	14	58	40	18
2	Aug-11	23	13	10	41	24	17
3	Sep-11	17	12	5	51	31	20
4	Oct-11	19	14	5	45	31	14
5	Nov-11	24	16	8	63	43	20
6	Dec-11	20	12	8	67	46	21
7	Jan-12	31	13	18	76	51	25
8	Feb-12	25	15	10	69	35	34
9	Mar-12	17	13	4	58	43	15
10	Apr-12	15	10	5	59	42	17
11	May-12	22	12	10	48	30	18
12	Jun-12	14	8	6	48	25	23
Total		254	151	103	683	441	242

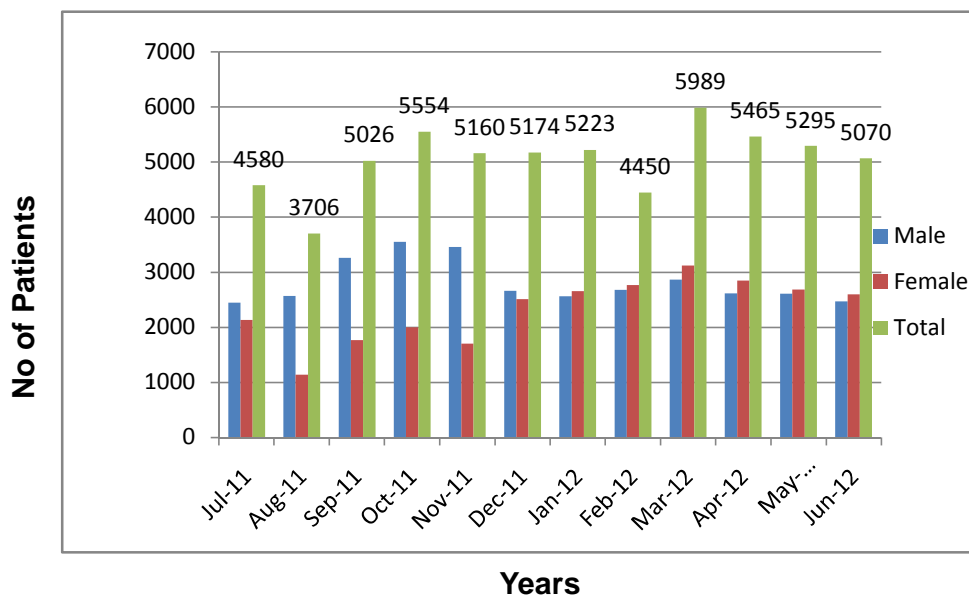
Summary Of E.R(Expire & BD)
1 July 2011 - 30 June 2012



Karachi Institute of Heart Diseases
Summary of ER
July 2011 To June 2012

S.No	Month & Year	Male	Female	Total
1	Jul-11	2449	2131	4580
2	Aug-11	2568	1138	3706
3	Sep-11	3260	1766	5026
4	Oct-11	3555	1999	5554
5	Nov-11	3457	1703	5160
6	Dec-11	2663	2511	5174
7	Jan-12	2565	2658	5223
8	Feb-12	2680	2770	4450
9	Mar-12	2864	3125	5989
10	Apr-12	2615	2850	5465
11	May-12	2608	2687	5295
12	Jun-12	2470	2600	5070
Total		33754	27938	60692

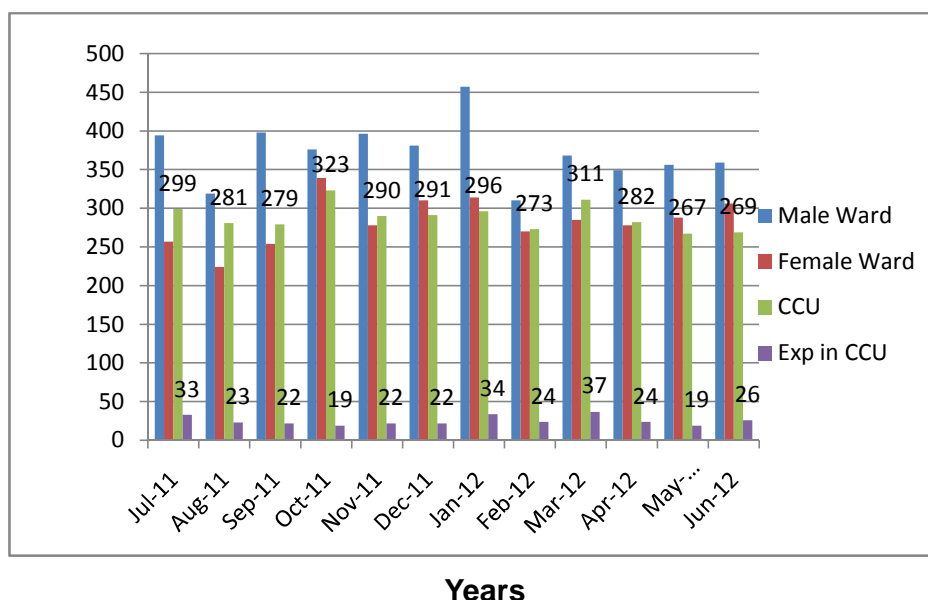
Summary Of E.R
1 July 2011 - 30 June 2012



Karachi Institute of Heart Diseases
Summary of Admission
July 2011 To June 2012

S.No	Month & Year	Male Ward	Female Ward	CCU	Exp in CCU
1	Jul-11	394	257	299	33
2	Aug-11	319	224	281	23
3	Sep-11	398	254	279	22
4	Oct-11	376	339	323	19
5	Nov-11	396	278	290	22
6	Dec-11	381	310	291	22
7	Jan-12	457	314	296	34
8	Feb-12	310	270	273	24
9	Mar-12	368	285	311	37
10	Apr-12	349	278	282	24
11	May-12	356	288	267	19
12	Jun-12	359	306	269	26
Total		4463	3403	3461	305

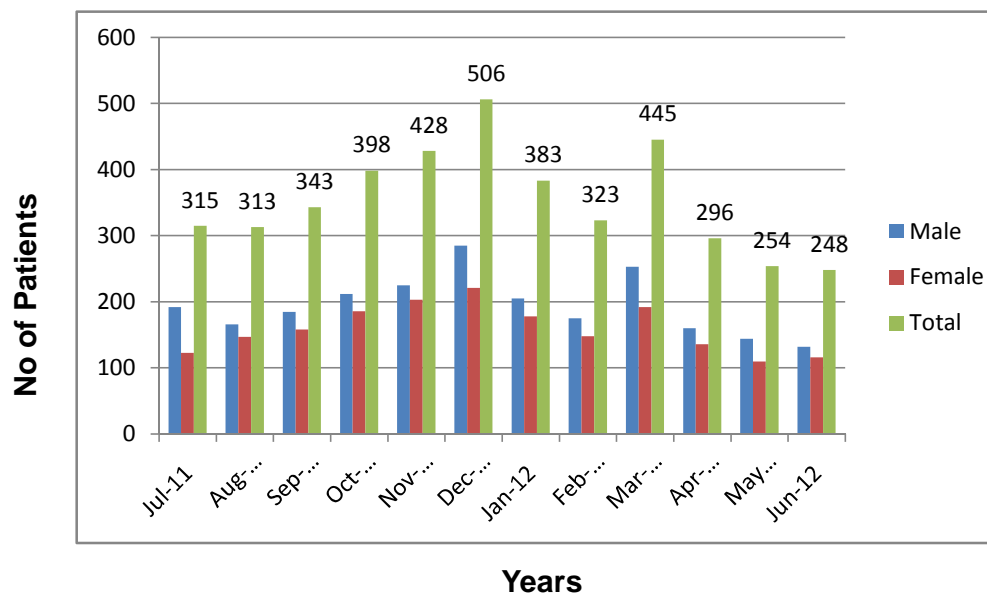
Summary Of Admission
1 July 2011 - 30 June 2012



Karachi Institute of Heart Diseases
Summary of X-Ray
July 2011 To June 2012

S.No	Month & Year	Male	Female	Total
1	Jul-11	192	123	315
2	Aug-11	166	147	313
3	Sep-11	185	158	343
4	Oct-11	212	186	398
5	Nov-11	225	203	428
6	Dec-11	285	221	506
7	Jan-12	205	178	383
8	Feb-12	175	148	323
9	Mar-12	253	192	445
10	Apr-12	160	136	296
11	May-12	144	110	254
12	Jun-12	132	116	248
Total		2334	1918	4252

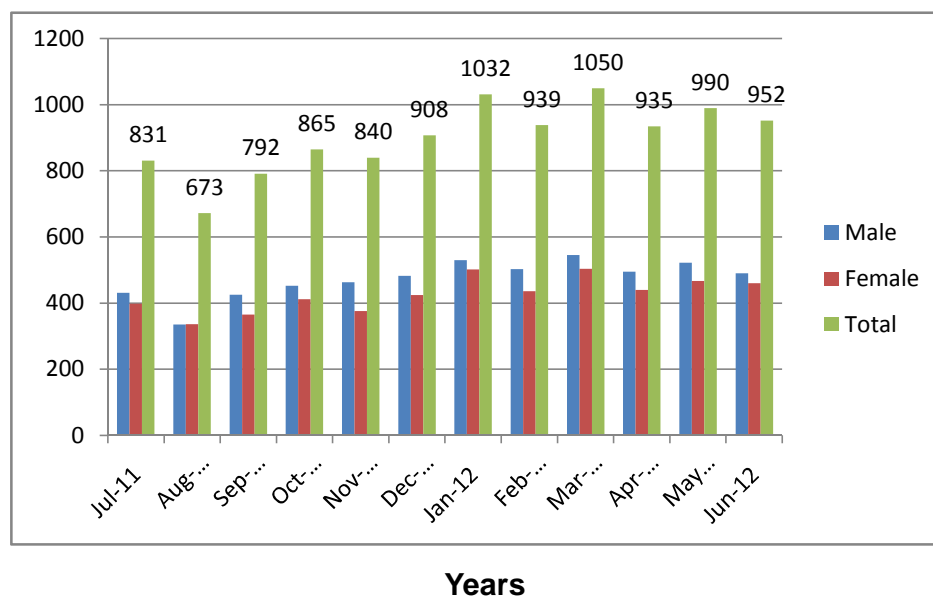
Summary Of X-Rays
1 July 2011 - 30 June 2012



Karachi Institute of Heart Diseases
Summary of Echo
July 2011 To June 2012

S.No	Month & Year	Male	Female	Total
1	Jul-11	432	399	831
2	Aug-11	336	337	673
3	Sep-11	426	366	792
4	Oct-11	453	412	865
5	Nov-11	464	376	840
6	Dec-11	483	425	908
7	Jan-12	530	502	1032
8	Feb-12	503	436	939
9	Mar-12	546	504	1050
10	Apr-12	495	440	935
11	May-12	523	467	990
12	Jun-12	491	461	952
Total		5682	5125	10807

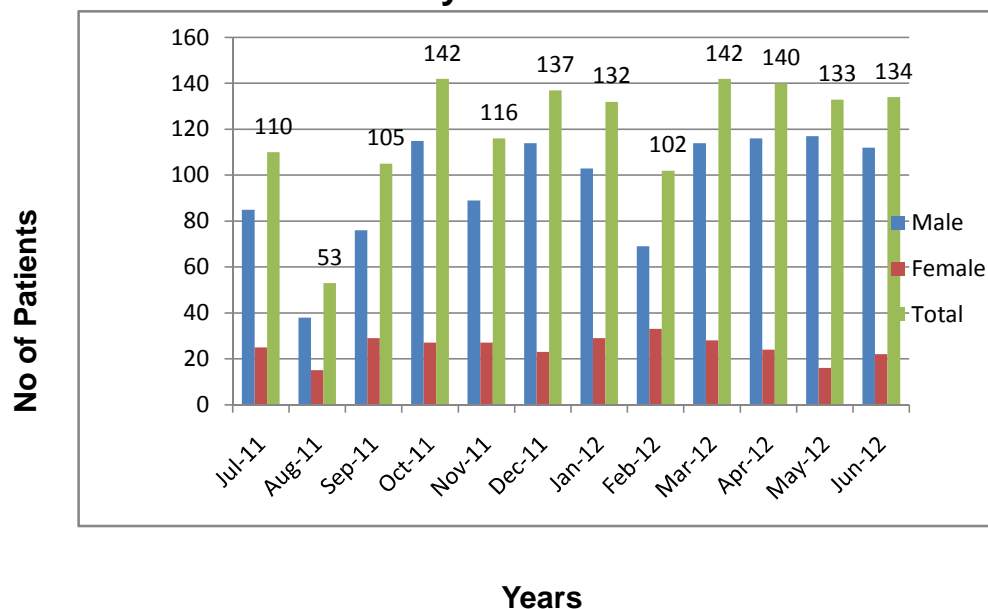
Summary Of ECHO
1 July 2011 - 30 June 2012



Karachi Institute of Heart Diseases
Summary of ETT
July 2011 To June 2012

S.No	Month & Year	Male	Female	Total
1	Jul-11	85	25	110
2	Aug-11	38	15	53
3	Sep-11	76	29	105
4	Oct-11	115	27	142
5	Nov-11	89	27	116
6	Dec-11	114	23	137
7	Jan-12	103	29	132
8	Feb-12	69	33	102
9	Mar-12	114	28	142
10	Apr-12	116	24	140
11	May-12	117	16	133
12	Jun-12	112	22	134
Total		1148	298	1446

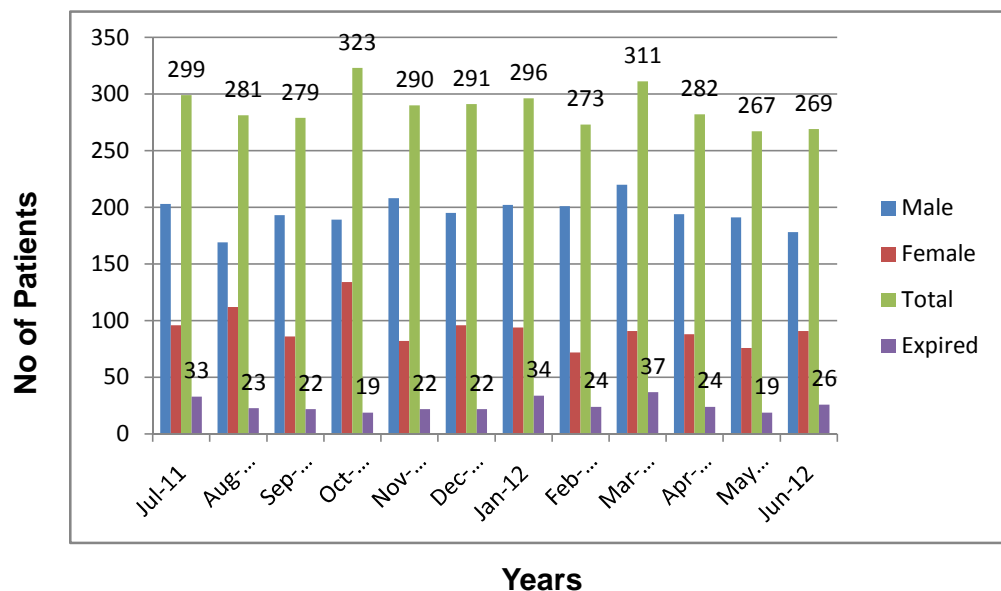
Summary Of ETT
1 July 2011 - 30 June 2012



Karachi Institute of Heart Diseases
Summary of CCU
July 2011 To June 2012

S.No	Month & Year	Male	Female	Total	Expired	Male	Female
1	Jul-11	203	96	299	33	16	17
2	Aug-11	169	112	281	23	15	8
3	Sep-11	193	86	279	22	15	7
4	Oct-11	189	134	323	19	15	4
5	Nov-11	208	82	290	22	17	5
6	Dec-11	195	96	291	22	12	10
7	Jan-12	202	94	296	34	16	18
8	Feb-12	201	72	273	24	19	5
9	Mar-12	220	91	311	37	25	12
10	Apr-12	194	88	282	24	16	8
11	May-12	191	76	267	19	12	7
12	Jun-12	178	91	269	26	13	13
Total		2343	1118	3461	305	191	114

Summary Of CCU
1 July 2011 - 30 June 2012



Karachi Institute of Heart Diseases
Summary of CCU
July 2011 To June 2012

S.No	Month & Year	Vent Patients	Male	Female	Vent Exp	Male	Female
1	Jul-11	21	8	13	9	4	5
2	Aug-11	17	10	7	11	5	6
3	Sep-11	22	18	4	11	7	4
4	Oct-11	22	17	5	6	1	5
5	Nov-11	14	8	6	5	4	1
6	Dec-11	25	17	8	12	8	4
7	Jan-12	26	14	12	10	5	5
8	Feb-12	18	12	6	10	8	2
9	Mar-12	34	18	16	13	11	2
10	Apr-12	26	11	15	10	5	5
11	May-12	27	14	13	10	6	4
12	Jun-12	28	15	13	14	7	7
Total		280	162	118	121	71	50

Summary Of CCU
1 July 2011 - 30 June 2012

